

Gauge	3/16
Manufacturing	Cut pile
Pile description	PA Luxus 2-ply
Primary backing	Woven
Pile weight	860 gr/m ²
Number of tufts	73.490 /m ²
Secondary backing	Actionback
Width	400 cm
Total weight	1770 gr /m ²
Total height	8 mm
Pile In/Out	Out
Roll length	25 m
DOP	1087#00626/11029/2
Fire classification	Cfl-s1
Use classification	31
TOG rating	1,25

Available colours Actionback | 400 cm 116 | 152 | 153 | 160 | 161 | 221 | 300 | 314 | 331 | 446 | 456 | 755 | 854 | 887 | 898 |

Colour legend	116	Stone	152	Silver	153	Dark Grey
	160	Rustic Grey	161	Charcoal	221	Grass
	300	Snow White	314	Mink	331	Suede
	446	Port	456	Cayenne	755	Orange
	854	Lilac	887	Oriental Blue	898	Petrol



These details are approximate. Complete specification details and associated certificates together with tolerances applying to the above can be provided upon request. We reserve the right to modify technical specifications without prior notice. Due to method of manufacture perfect pattern and/or colour matching can not be guaranteed. In cut-pile carpeting, in rare cases, shading/pile reversal may occur without affecting its fitness for use. Shading/pile reversal can not be considered as a manufacturing or a material defect and will not affect the durability of the carpet.

BIG Floorcoverings nv Rijksweg 442 | 8710 Wielsbeke - Belgium | T +32 (0)56 67 42 11 | F +32 (0)56 67 48 40 | www.ideal-bintg.com

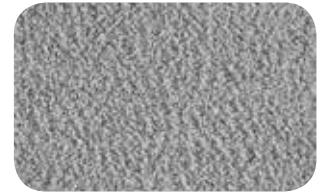
08.10.2018 | ISO N090N02/2/01-01-10



Beaulieu
International
Group



116 - 400 cm



152 - 400 cm



153 - 400 cm



160 - 400 cm



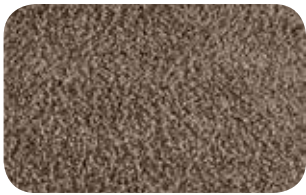
161 - 400 cm



221 - 400 cm



300 - 400 cm



314 - 400 cm



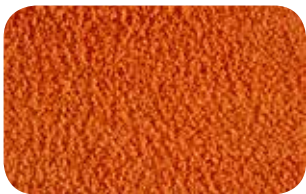
331 - 400 cm



446 - 400 cm



456 - 400 cm



755 - 400 cm



854 - 400 cm



887 - 400 cm



898 - 400 cm