



LIC+ REALSTONE



LICO REALSTONE - Glimmerschiefer Verde Gris

LICO REALSTONE

Echter Naturschiefer: Realstone

Realstone ist der fusswarme Steinbodenbelag, der in Optik, Haptik und Qualität einem Echtschieferboden aus massiven Platten gleichkommt. Zugleich werden dessen Nachteile verhindert (Kosten, Fugen, kalt und hart). Der Naturstein in seinen verschiedenen Schiefersorten (Schiefer und Glimmerschiefer) und seinen natürlichen Farben machen jedes Paneel zum Unikat und einem Erlebnis für die Sinne.

LICO REALSTONE

Real natural slate: Realstone

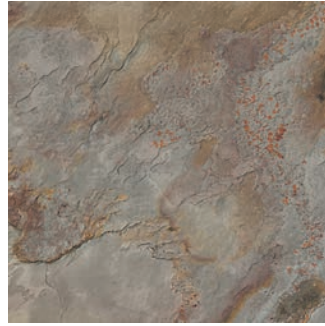
Realstone is the stone flooring, which is warm to the feet, equal as a solid stone slab regarding its look and feel as well as its quality. However the floor does not share the negative characteristics of a natural stone (costs, joints, coldness and hardness). The different sorts of this natural stone (slate or mica slate) and its natural colours make every panel unique and an experience for all the senses.



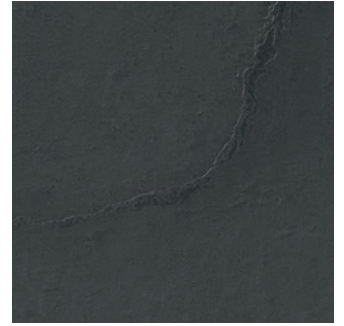
80001 Glimmerschiefer Auro
Mica Slate Auro



80003 Glimmerschiefer Verde Gris
Mica Slate Verde Gris



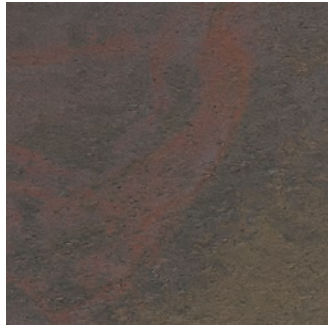
80501 Schiefer Blanco
Slate White



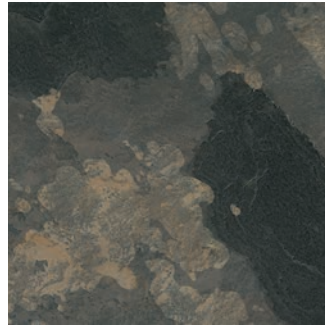
80004 Glimmerschiefer Negro
Mica Slate Negro



80502 Schiefer Falling Leaves
Slate Falling Leaves



80503 Schiefer Arcobaleno Color
Slate Arcobaleno Color



80504 Schiefer Rustique
Slate Rustique



Klassifikation / Classification



Vorteile / Advantages



Weitere Vorteile

- Aus nachwachsenden Rohstoffen
- Echte Naturstein-oberfläche
- Strapazierfähig
- Gelenkschonend
- Fusswarm
- Geeignet für Allergiker
- Wärmeisolierend
- Antistatisch
- Schall- und Trittschall-isolierung

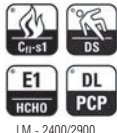
Further advantages

- Made of regrowing raw material
- Real stone-surface
- Durable
- Soft to the tread
- Warm to the touch
- Suitable for allergies
- Thermal insulation
- Anti-static
- Sound impact and phonic insulation

Format / Dimension



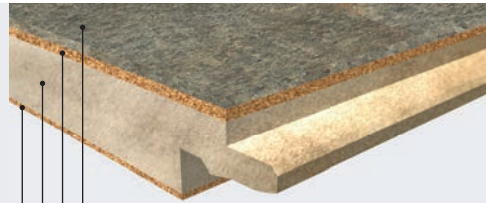
Zertifikate / Certificates



FSC zertifiziert lieferbar
FSC certificate available

UNICLIC
EU Patent 0843763 B1 - U.S. Patent nr. 6.006.492
Leimfreies Klick-System
Glueless click-system

HDF 11,0 mm



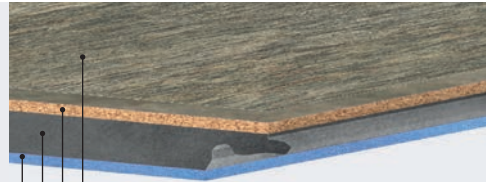
Echter Stein / Naturschiefer (PU vergütet-imprägniert)
Real stone / natural slate (PU impregnation)

Kork Composite
Cork Composite

Hochverdichtete, feuchtigkeitshemmende Natur Faserplatte
High density, moisture retardant fibre-board

Presskork Gegenzug
Cork underlay

HYDRO SOUND 8,5 mm



Echter Stein / Naturschiefer (PU vergütet-imprägniert)
Real stone / natural slate (PU impregnation)

Kork Composite
Cork Composite

Wasserfeste Hydro Trägerplatte
Waterproof hydro core board

Hydrosound Gegenzug
Hydrosound underlay

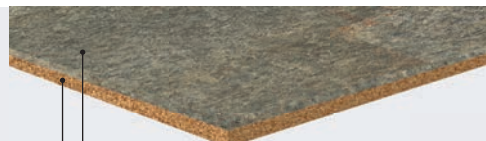
FLIESE / TIELE 3,0 mm



Echter Stein / Naturschiefer (PU vergütet-imprägniert)
Real stone / natural slate (PU impregnation)

Kork Composite
Cork Composite

FLIESE / TILE 6,0 mm



Echter Stein / Naturschiefer (PU vergütet-imprägniert)
Real stone / natural slate (PU impregnation)

Kork Composite
Cork Composite